

# CORE

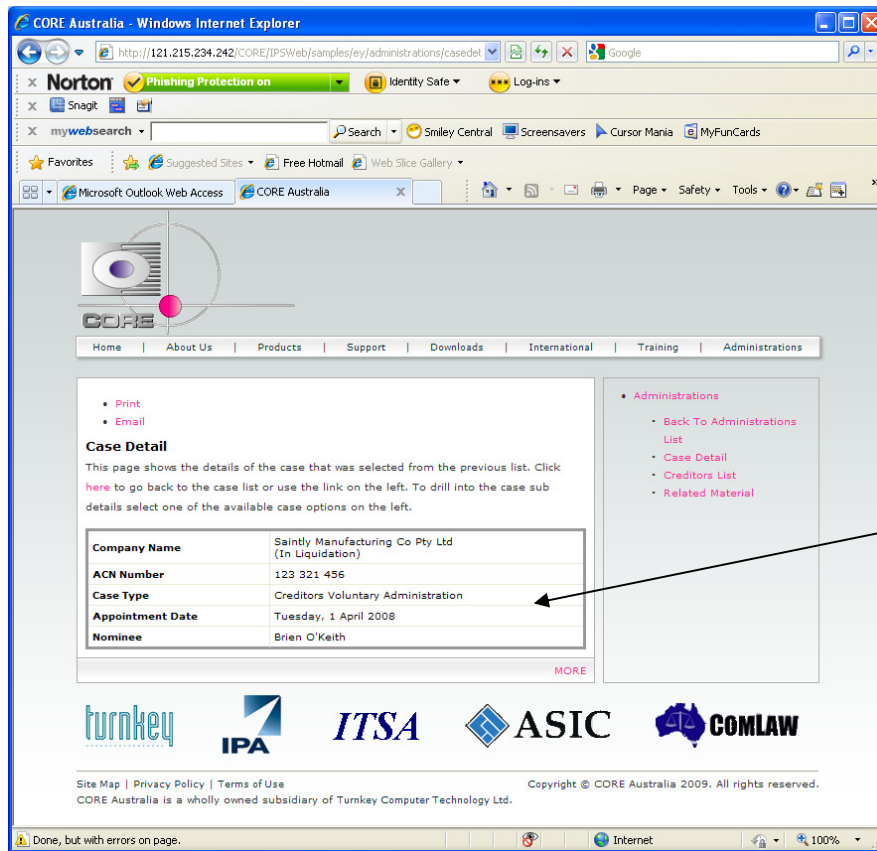
## IPS Insolvency Software takes a giant leap forward

*Take a technological leap* forward with CORE and place yourself ahead of the competition. Allow us to 'Web Enable' your CORE IPS data into your firm's web site, thus bringing relevant client /creditor information to the public domain.

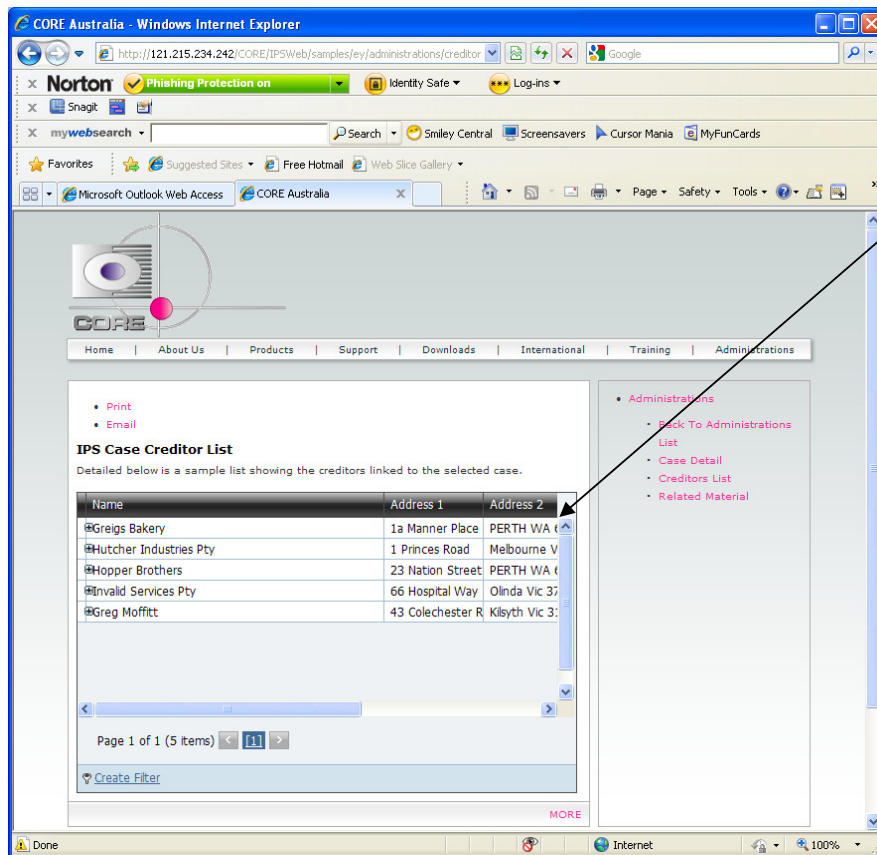
CORE Australia's newest member of our Development and Support team - Walter Gray, comes from a rich and varied background in application and web development where he held senior development roles for many blue chip organisations. Walter's extensive knowledge of IPS software and Web development places him in a unique position of being able to integrate IPS information into Client's websites.

Example of IPS Web site integration

IPS cases are displayed on a separate page. Case information such as case details, creditor status, public documents e.g. creditor meeting agendas and minutes and other related material (e.g. ASIC and ITSA guides) can be accessed from the web page.



Drilling down on the case name will display the case details that have been extracted from the 'Case Setup' screen of IPS.



A full Creditors' list for the case is shown. The list may include creditor names, addresses also SOA/RATA, Proof and Adjudicated values.

Creditors will be able to access this information, via login ID and password to enter their Proof of Debt and lodge Proxy votes. They will also be able to monitor the adjudication of their Proofs of Debt.

The content and format of the Web page design is completely customisable enabling clients to determine exactly what information is made public and the security afforded to the displayed information.

Other development services available based on your business needs are:-

- Creating and integrating Web sites with IPS information allowing easy access to public information. Creditors' will have information to hand via the web site.
- Designing and developing completely new applications for either the internet/intranet or windows environments that may include:
  - Customer Portals
  - Data Capture Applications (CRM - Customer Relationship Management / ERP – Enterprise Resource Planning)
  - Custom Business Reporting Applications
  - Data Integration Applications
  - Home Web Sites
- .NET based architecture and design.
- Development for existing platforms such as Sharepoint.
- SQL Server Database Design & Development
  - SQL Server Reporting Services
- Business Integration Projects - creating middle ware to move data from one system to another

Should you require further information or a demonstration of the Web integration please do not hesitate contacting CORE.

Australian Support Line: 1300 308 424  
International Support Line: +613 9629 9773  
Skype Calls are available on: COREIPSSupport  
Walter Gray: walter\_gray@coreaustralia.com.au  
Support Email: support@coreaustralia.com.au  
Web www.coreaustralia.com.au